

contact us

Oceana Marine Service Limited

China Market

Mob/WeChat/WhatsApp: +86-18103356880

Asia (Excluding of China) Market

Mob/WeChat/WhatsApp: +86-18103356881

Europe Market

Mob/WeChat/WhatsApp: +86-18103356883

Other area Market

Mob/WeChat/WhatsApp: +86-18103356887

Technical service support

Mob/WeChat/WhatsApp: +86-18103356885

Suggestions and/or Complaints

Mob/WeChat/WhatsApp: +86-18333589299 Mr.Leo Lee

Address: 6C, No. 39, Emeishan Middle Road, Haigang District,
Qinhuangdao, Hebei Province, China

Website: www.oms.work Email: info@oms.work



欧申海纳航运服务(上海)有限公司
OCEANA MARINE SERVICE LIMITED

ONE-STOP service station for ICCP & MGPS systems



Service station: China, Southeast Asia (Singapore, Thailand, Malaysia, Vietnam), UAE, Oman, Turkey

Storehouse : China (Qinhuangdao, Zhoushan, Jiangyin, Qingdao, Guangzhou), Singapore, Turkey

Website: www.oms.work

Email: info@oms.work

Who we are

Oceana Marine Service Limited (OMS) is a company dedicated to maritime industry services located in China where is the global ship repair center.

OMS focus on the marine ICCP anti-corrosion system and MGPS anti-fouling system spares supply and technical service.

OMS system operates in accordance with ISO standards.

OMS keep strong spares storage which support to meet drydock urgent requirement.

OMS strive to achieve: order on today, supply on board tomorrow with competitive cost.

OMS has skilled service team who well-known all the major maker's system.

ONE-STOP service station for ICCP & MGPS systems with 24*7 standby for your disposal.

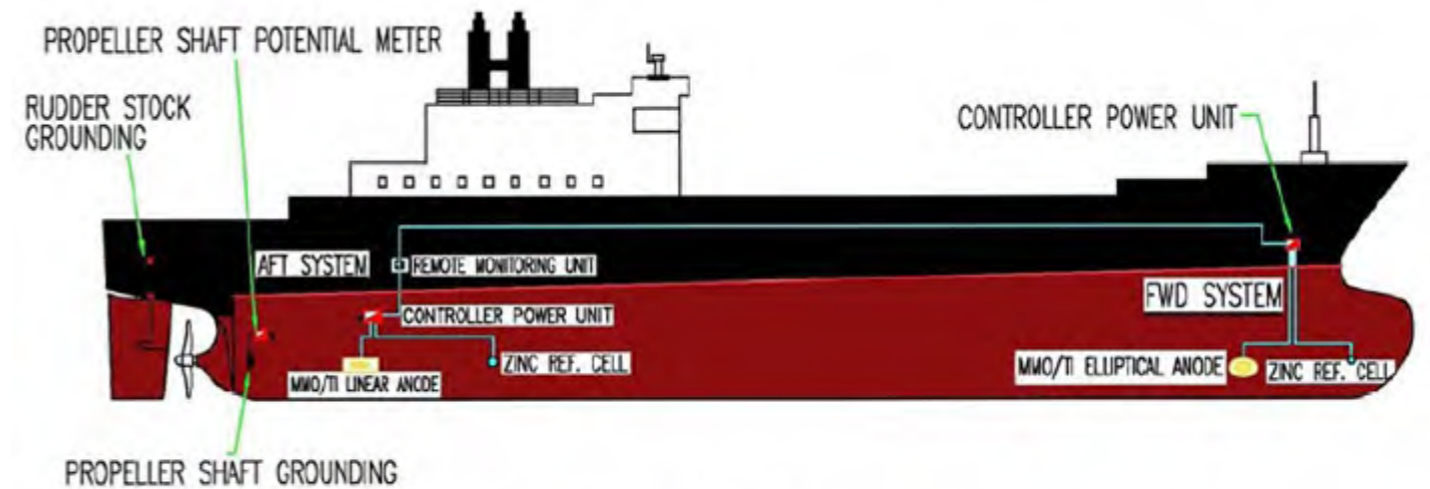


How is ICCP working

Impressed current cathodic protection systems are since many years a perfect solution to control corrosion issues at hulls.

The ICCP system can be easily installed on any type of vessel. A complete installation consist a number of ICCP anodes, reference electrodes and a power unit to control the system.

An optimum and controlled balance of DC currents which will be send trough the water leads to the prevention of galvanic corrosion.



TYPICAL EQUIPMENT LAYOUT OF AN ICCP SYSTEM

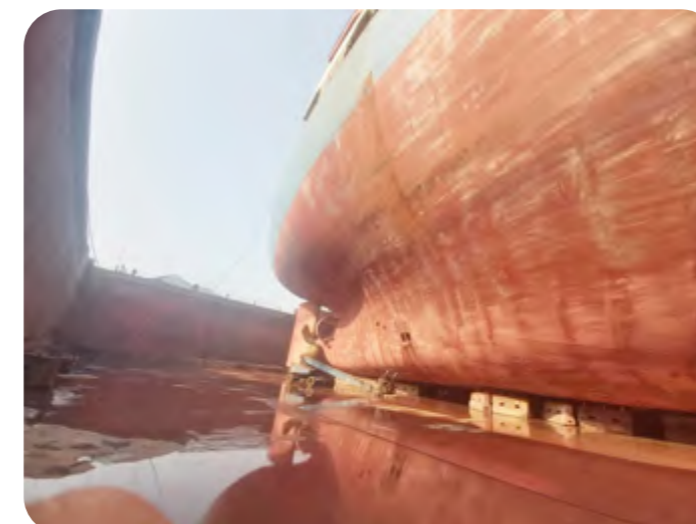
Impressed current cathodic protection systems are the ultimate state-of-the-art, long-term solution to corrosion problems, and are recognized as a superior alternative to sacrificial anode systems, which require frequent replacement. Impressed current cathodic protection systems are preferred by ship owners because they reduce fuel cost and maintenance.



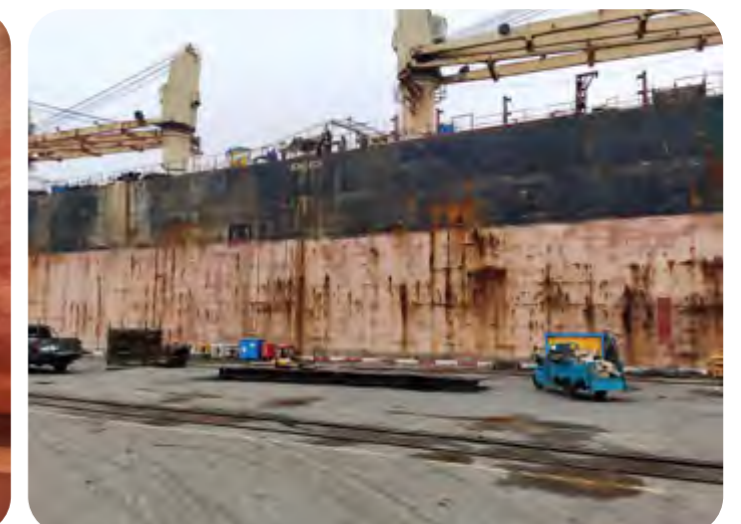
ISO 9001

ISO 14001

ISO 45001



VESSEL WITH CATHODIC PROTECTION



VESSEL WITHOUT CATHODIC PROTECTION

OMS ICCP spares covered:

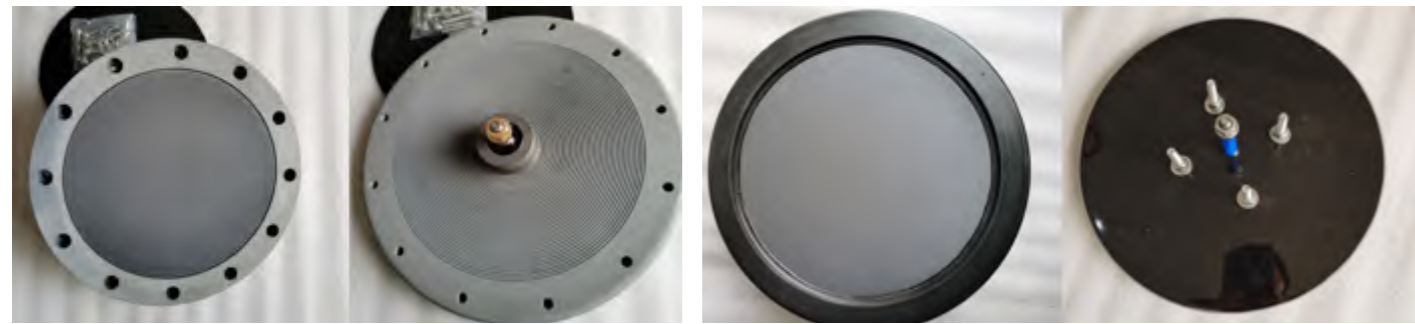
- AA) ICCP Anodes (MMO/Ti material including Circular /Elliptical/ Linear type etc);
- BB) Reference Cells for ICCP (Zincand/or Ag/AgCl material including Circular /Elliptical type) ;
- CC) Other materials:Epoxy filler/Putty(Intergard EAA 820/821),Vaseline Wax etc.
- DD) ICCP Power unit controller and inner parts : PCBs+Transformer+Thyristors ect.



ICCP CIRCULAR ANODE

ICCP LINEAR ANODE

ICCP LINEAR ANODE



ICCP ANODE

ICCP CIRCULAR ANODE



ICCP CIRCULAR ANODE

ICCP CIRCULAR ANODE



ICCP ELLIPTICAL ANODE

ICCP CIRCULAR REF.CELL



ICCP REF.CELL

ICCP ELLIPTICAL REF.CELL

ICCP CIRCULAR REF.CELL



AG-AGCI REF.CELL

EPOXY FILLER



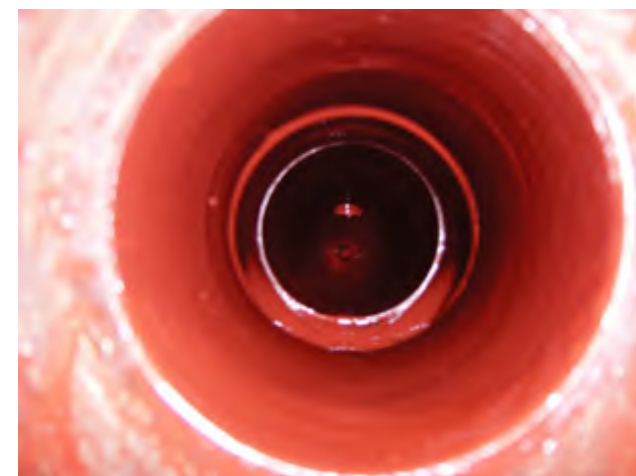
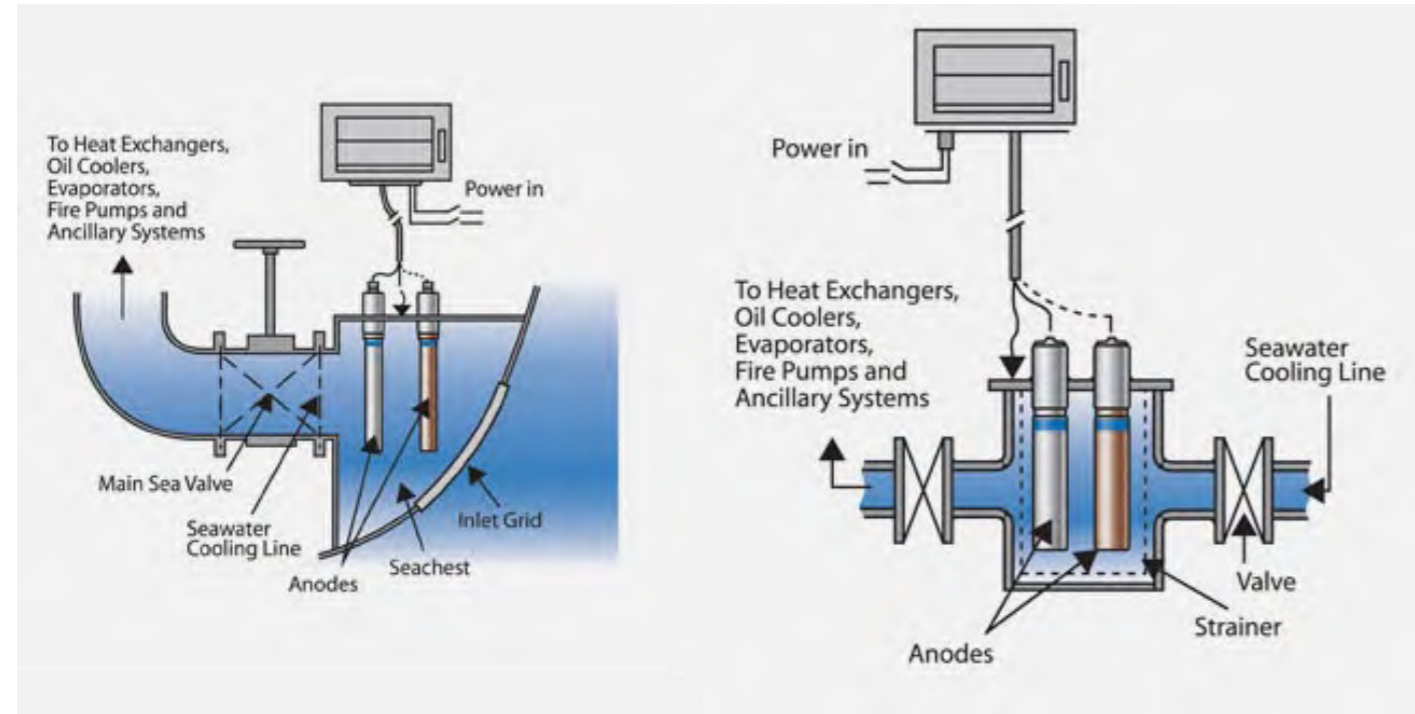
ICCP POWER CONTROL UNIT

ICCP POWER CONTROL UNIT

ICCP PCB

How is MGPS working

Ships are dependent on the seawater upon which they travel for a variety of reasons. One primary function seawater serves is to cool the engine and parts of the ship while it's operating. The used seawater is then discharge back into the sea and new seawater taken in, forming a continuous flow of exchange of saline water between the ship and its surrounding aqueous environment. Despite its benefits, the downside of this is that seawater contains marine organisms (both macro and micro), some visible to the naked eye while most are not. As the seawater passes through the various pipes and parts of the ship's engine, marine organisms are deposited along their surface. Over time, the deposit builds up, reducing the efficiency of the ship's engine and in severe cases, choking the entire system of the ship's engine which could eventually lead to malfunction of the entire ship's engine.



VESSEL PIPES WITH MGPS PROTECTION



VESSEL PIPES WITHOUT MGPS PROTECTIO

OMS MGPS spares covered:

- AA) Cu/Fe/Al anodes for MGPS;
- BB) Electrolytic seawater anodes (MMO/Ti or Ti-Pt materaila) for MGPS ;
- CC) MGPS Power unit controller with inner parts (PCBs+Transformer+Thyristors ect.)



MGPS ANODE & WATERTIGHT



MGPS ANODE & WATERTIGHT



MGPS ANDOE



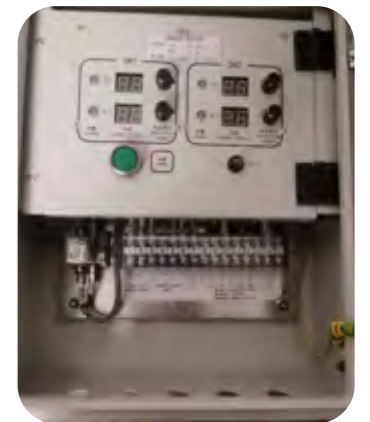
Pt-Ti CATHODE



ECOLCELL



MGPS POWER CONTROL UNIT



MGPS POWER CONTROL UNIT



FILTER FOR MGPS



FLOW METER

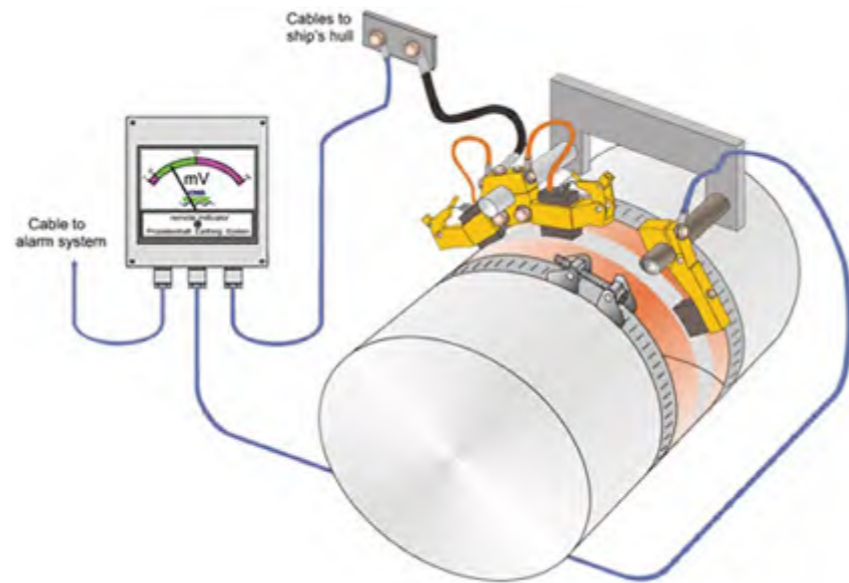


DIAPHGRAM VALVE

3. Shaft Earthing System (S.E.S)

If the ship has a system of cathodic protection, whether it is sacrificial anodes or an impressed current cathodic protection system, the shaft insulation will prevent the propeller and the boss from receiving protection.

The electrical potential between shaft and hull can also cause a heavy current to flow in bearings when the oil film breaks down or is contaminated with seawater. This current can cause deep pitting of the bearing surface. Excessive wear on the shaft bearings can often be traced to this cause. Trouble can be avoided and cathodic protection extended to the propeller if the shaft is properly earthed with a shaft earthing system.



OMS Shaft Earthing System spares covered:

- AA) Slipping/Sliver band with Repair kit;
- BB) Silver graphite brush with related holders;
- CC) mV meter (Digital and Dial type)
- DD) RBS cables



BRUSH & BRUSH HOLDER



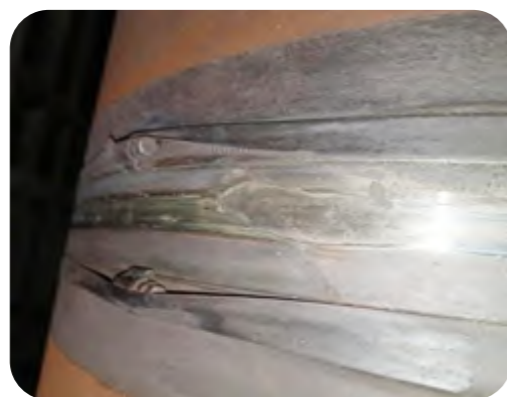
PURE SILVER SLIP RING



SLIP RING



RENEW SLIP RING



SLIP RING WAS WORN



RENEW DOUBLE BRUSH HOLDER

OMS provide the professional technical service covered:

Our service station covered all the major ports in the world, and our technician can visit vessel timely if any attendance required.

We can provide the monitoring system with charge free after received the log sheet from vessel each month.

1. Pre-docking inspection service:

- Inspect and test the power unit;
- Test anodes' respective maximum loading capacity;
- The anode/reference cell potentials etc;

2. Dry docking inspection service:

- For inspecting the physical/Insulation/watertight conditions of the anodes, reference cells, Di-electric shield areas conditions;
- The supervision on spare part renewal work or relative repair work. (if any)/ Old system modification and /or new system design;

3. Un-docking commissioning service:

which will be required if any renewal job had in dry-dock, for a ultimate commissioning to make sure the system working in order after undocking.



ANODE RENEWED



ANODE RENEWED



REF. CELL RENEWED



ANODE RENEWED



ANODE RENEWED



ANODE RENEWED



INSPECTION ICCP POWER UNIT



INSTALL ANODE



INSPECTION ICCP POWER UNIT



INSPECTION MGPS POWER UNIT



INSPECTION ICCP POWER UNIT

Sacrificial Anode

In cathodic protection, pieces of metal (known as Sacrificial Anode) are linked electrically to the ship's hull. These anodes, are made of metals more reactive than the material used for the ship's body and systems. As such, they will corrode in place of the ship's body and systems while the ship stays protected, giving rise to the name 'sacrificial Anodes'

Al/Zn anodes for Sec Chest/Hull/Tank/Rudder area (welded and/or bolted type)



SACRIFICIAL ANODE



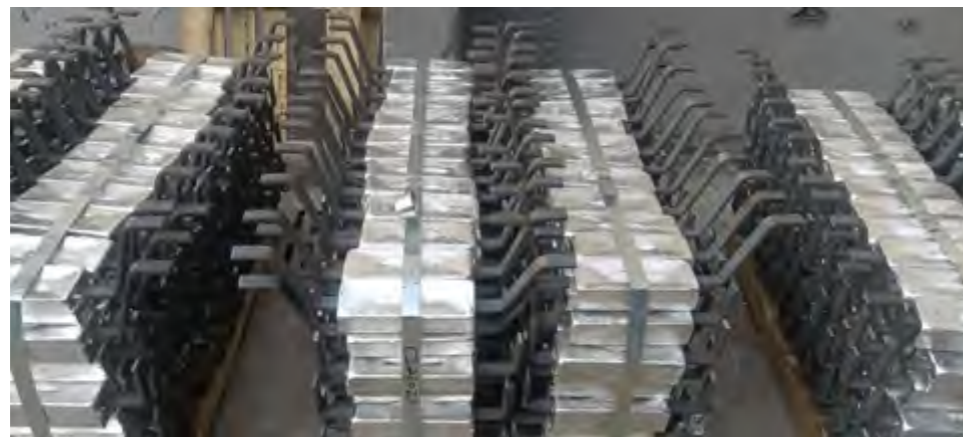
SACRIFICIAL ANODE



SACRIFICIAL ANODE



SACRIFICIAL ANODE



SACRIFICIAL ANODE

6.Valve And Valve Pad

OMS has its own cooperation production manufactory, which can provide with high quality of Valves and Valve seat rings with the competitive price.

We can provide marine valves and accessories such as stop check valve, check valve, gate valve, storm valve, over-board valve, quick-closing and quick-opening valve, butterfly valve, drain valve, pressure reducing valve, air vent, low-temperature valve, non-standard valve, with a total of more than 4000 specifications and varieties.



NON-RETURN VALVE



CHECK VALVE



QUICK CLOSING VALVE



FLOAT TYPE AIR PIPE HEAD



TWIN STRAINER



FLOAT TYPE AIR PIPE HEAD



SAFETY VALVE