



SHIPLUS

EXCLUSIVE AGENTS  
**BPCO LTD**  
Shipbrokers/Ship Repairs and Conversions  
13-17 Kalvou Str., 15233 Halandri, Athens - Greece  
Tel.: +30 210 6850413 / +30 211 7004512  
e-mail: info@bpco-group.com  
www.bpco-group.com

# 青岛锡普船务有限公司

SHIPLUS MARINE & OFFSHORE ENGINEERING CO.,LTD



中国·青岛  
QINGDAO CHINA



## 联系我们 CONTACT US

### **Shiplus Marine & offshore Engineering Co.,Ltd**

QINGDAO HEADQUARTERS-MARINE SERVICE  
FANGCHENGANG SUBSIDIARY-DIVING SERVICE

24 HOURS DUTY MOBILE:

+86 139 6390 1370 / 186 6976 1025

座机 T :+86 532 8090 7612

传真 F: +86 532 8090 7613

邮箱 E: service@shiplusm.com

网址 W:www.shiplusm.com

地址 Add:

QINGDAO HEADQUARTERS:

Room 513, 1# Building, Sun Island. No.52, Ha'erbin Rd, Qingdao,  
P.R.China. 266011

FANGCHENGANG SUBSIDIARY:

5-1, Xingfu Garden, Shawan RD, Gangkou District, Fangcheng,  
P.R.China, 538001

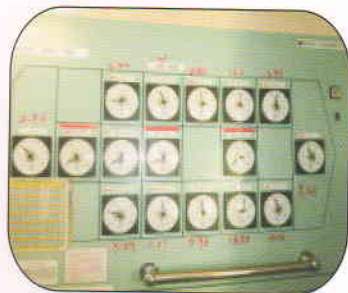
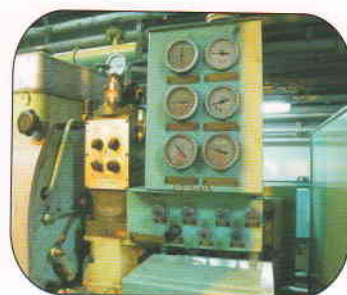




# 自动化服务 AUTOMATION SERVICE

## 服务内容|Content

- 1.主机气动控制系统 | M/E Pneumatic Control Sys
- 2.机舱监视报警及控制系统 | ECR Monitoring Alarm & control Sys
- 3.主辅机安全保护 | M/E,A/E Safety Guard
- 4.锅炉自动控制系统 | Boiler Automation
5. 大舱液位,船体吃水系统 | Tank Level Gauge & Draft Gauge
- 6.火警探测系统 | Fire Detection Sys.
7. 船舶电站,主开关校验 | MPS , ACB Calibration
8. 甲板机械液压控制系统, 克令吊检验  
Deck Machinery Hydraulic Control Sys. Crane Inspection
9. 油分浓度计检验 | Oil Content Meter 15PPM
10. 排油监控 | ODME





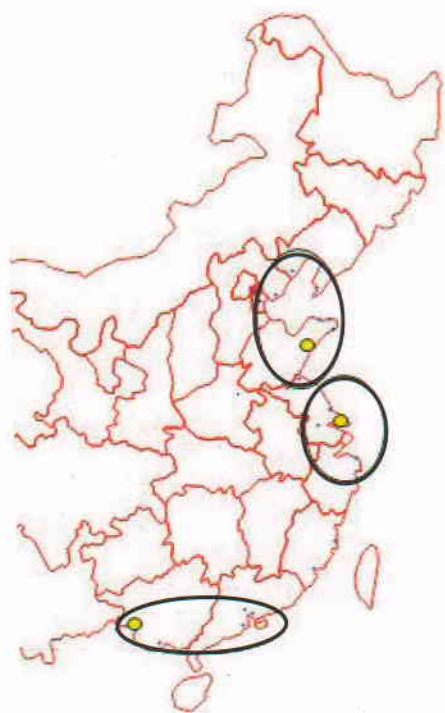


# 应急修理 PORT & AFLOAT REPAIR

## A.服务内容|Content

- 1.钢质工程修理 | Steel Work
- 2.管系及泵阀检修 | Pipe work , Pump & Valve overhaul
- 3.主副机常规保养维护 | M/E &A/E Overhauling
- 4.舱盖/克令吊/锚缆机/修理  
Hatch Cover/Deck Crane/ Windlass & Mooring winch
- 5.吊重试验 | Cargo Gear Load Test
- 6.PSC检查缺陷修理 | PSC Inspected defects rectification
- 7.发电机,电机重绕 | Generator/El.motor rewinding
- 8.生活区空调系统 | Accommodation A/C system
- 9.船用冰机 | Provision Refrigeration Sys
- 10.油舱清理 |F.O Tank clean/Sludge oil& slop disposal

## B.服务网络|Service Net



### 服务站/Service Station

- 青岛 / Qingdao
- 大连 / Dalian
- 天津 / Tianjin
- 日照 / Rizhao
- 连云港 / Lianyungang
- 上海 / Shanghai
- 长江沿港/ Yangtze River port
- 深圳 / Shenzhen
- 防城港 /Fangchenggang



SHIPLUS

# 应急修理 PORT & AFLOAT REPAIR

## GENERATOR REPAIR

### 1. Alternator removal & transporting to w/s



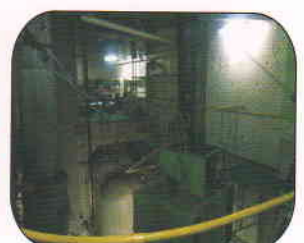
mark



deflection measurement



wire disconnect



move out

### 2. Disassemble / clean/ stator rewind/rotor maintenance varnish



core repair



rewinding



rewinding



connected



clean



maintenance



maintenance



varnish

### 3. Bake/test /Box up/ Fit back/ Running test



bake



balance test



measurement



box up



fit back



gasket adjustment



deflection measurement



running test





# 水下工程 UNDERWATER SERVICE

## A.服务内容|Content

- 1.水下检验 | Underwater Inspection (CCTV+ Photo)
- 2.船体清洁, 推进器抛光 | Hull Cleaning/ Propeller Polishing
- 3.水下封堵 | Underwater Blanking
- 4.水下焊接 | Underwater Welding

## B.服务网络|Service Net

1. 北方港口 (大连, 天津, 青岛, 日照, 威海等)  
Northern Chinese Port ( Dalian, Tianjin, Qingdao, Rizhao, Weihai, etc)
2. 南方港口 (防城, 湛江, 广州, 深圳等)  
Southern Chinese Port ( Fangcheng, Zhanjiang, Guangzhou, Shenzhen, etc)







# 校验服务 CALIBRATION SERVICE

## A.服务内容|Content

1. 气体探测器 | Portable Gas Detector
2. 温度/压力校验仪 | Temp. /Pre. Calibrator
3. 压力表/温度表 | Pre.Gauge / Temp. Meter
4. 油水界面仪 | UTI
5. 蒸汽回收系统 | VAPOUR Sys.
6. 固定式气体探测系统 | Fixed Gas Detection Sys
7. 扭矩扳手 | Torque Wrench







# 校验服务 CALIBRATION SERVICE

## B.证书|Certificate



**MMC** Keeping You in Control

MMC International Corp.  
60 Inip Drive, Inwood, New York 11096 USA  
Telephone: 516-239-7339 Fax: 516-371-3134 E-Mail: mmcimwd@aol.com

Dec. 11, 2013

Reference: MMC UTI GAUGING UNIT

To Whom It May Concern:

We hereby authorize Sunrise Marine Technology Calibration & Test Center (CHINA) to offer on our behalf a quotation/inspection for UTI Gauging Unit.

We trust you will look favorably upon their submission.

Very truly yours,  
*William Henry*  
President

**Certificate**  
*of achievement*

This certifies that

Gao Feng  
P.R. China

has successfully completed the training requirements for the operational and maintenance procedures of the:

Flowmeters  
ViscoSense®  
Oilon®  
T-Sense  
Alarm units

Incorporating the theory and application of UAF instruments products and systems.

Dated at, Friday, 11th November 2013  
Service Manager: \_\_\_\_\_ Area Manager: \_\_\_\_\_ Trainer: \_\_\_\_\_

**MMC GAUGING TAPE**

ITS GAS-TIGHT CONSTRUCTION MEETS ENVIRONMENTAL AND SAFETY CODES.

Triple-function portable gauging tape.

**MMC**

Seams You Around The World



# 船厂代理 DOCKING YARD AGENCY

## I. COOPERATOR:

**LIANYUNGANG HONGYUN CO.,LTD** (34°45'0"N,119°27'0"E)

A member of Lianyungang port group, the strongest shipyard at local

## II.SCOPE:

**1. Port & afloat Repair**

**2. Underwater Service**

**3. Dockyard Repair**

"WU DANG SHAN" floating dockyard

L 143m x B26m , lift 6000tons ,

## III. ADVANTAGE

1. it is in Lianyungang main port and easy for ship to move to yard.
2. It belongs to local Port group and easy to use wharf for the afloat repair.
3. Special team for the steel/pipe/machinery jobs.
4. There are own float crane/tug boat/pilot boat and other device, and it will be cheap for own repair job.





# 设备代理/安装 EQUIPMENT AGENCY/INSTALLATION

EQUIPMENT INTRODUCTION:

## MARINE SHORE POWER SYSTEM

Marine shore power system is composed of two parts:

Shore Connection-system in wharf and Shore Connection-system on board.

### **Wharf Shore Connection-system:**

substation in wharf apron ports services High-voltage frequency power and High-voltage regulating power;

its rated voltage is 6kV50Hz or 10kV50Hz. The device of High-voltage Shore Connection-System converts input voltage to 6.6kV60Hz or 6kV50Hz. With cable trench, transport trestle bridge and related facilities, High-voltage cable lays to the High-voltage wharf junction box near the stern of anchored ships.

### **Onboard Shore Connection-System:**

ships at port are connected with junction box, through cable plug of onboard cable winch, transmitting power to ships.

Onboard high-voltage inlet and outlet cabinet feeds high-voltage to transformer. The transformer reduces high voltage as low as rated voltage of ship substation. Low-voltage cable and main switch of shore connection-system feeds power to main cylinder manifold, serving ships during ports.

